

THE RUDIMENTS:

A Learning Sequence

INCLUDING: APPLICATION EXERCISES AND PROGRESS CHART

Quadrant B

11. Single Stroke Seven
12. Paradiddle-diddle
13. Flam Accent
14. Swiss Army Triplet
15. Flamacue
16. Nine Stroke Roll
17. Thirteen Stroke Roll
18. Seventeen Stroke Roll
19. Lesson 25
20. Single Dragadiddle

Learning Sequence Handbook Courtesy Of:

VIC FIRTH

the number ONE drumstick in the world!

Download a FREE copy at <http://www.VicFirth.com>

THE RUDIMENTS:

A Learning Sequence

Quadrant B, page 2

14. SWISS ARMY TRIPLET

Musical notation for Swiss Army Triplet, showing a triplet of eighth notes on a treble clef staff. The notes are G4, A4, and B4. The first note has an accent (>). Below the staff, the following sequence of letters is written: LR R L LR R L LR R L LR R L. Below that, the sequence RL L R RL L R RL L R RL L R is written.

Applied:

Applied musical notation for Swiss Army Triplet, showing a 4/4 time signature and a series of eighth notes with triplet markings. The notes are G4, A4, and B4. The first note has an accent (>). Below the staff, the following sequence of letters is written: RR LL RR LL RR LL RR LL RRL LLR RRL LLR RRL LLR RRL LLR R L R L R L R L R L RRL LLR RRL LLR RRL LLR.

TRACK YOUR PROGRESS:

BRONZE	SILVER	GOLD	PLATINUM	DIAMOND
<i>m.m. = 35 – 50</i>	<i>m.m. = 55 – 70</i>	<i>m.m. = 75 – 95</i>	<i>m.m. = 100 – 120</i>	<i>m.m. = 120 – 135</i>

15. FLAMACUE

Musical notation for Flamacue, showing a treble clef staff with a sequence of eighth notes: G4, A4, B4, A4, G4, F4, E4, D4. The first note has an accent (>). Below the staff, the following sequence of letters is written: LR RL L R L LR RL.

Applied:

Applied musical notation for Flamacue, showing a 4/4 time signature and a series of eighth notes with accents. The notes are G4, A4, B4, A4, G4, F4, E4, D4. Below the staff, the following sequence of letters is written: RL LR R L LR L RLR LRL LRL L RLR LRL LRL L RLRL LRL LRL LRL LRL RLRL LRL LRL LRL LRL.

TRACK YOUR PROGRESS:

BRONZE	SILVER	GOLD	PLATINUM	DIAMOND
<i>m.m. = 40 – 60</i>	<i>m.m. = 80 – 95</i>	<i>m.m. = 100 – 115</i>	<i>m.m. = 120 – 155</i>	<i>m.m. = 140 – 160</i>

16. NINE STROKE ROLL

Musical notation for Nine Stroke Roll, showing a treble clef staff with a sequence of eighth notes: G4, A4, B4, A4, G4, F4, E4, D4, C4. The first note has an accent (>). Below the staff, the following sequence of letters is written: RLLRLLR LLRLLRRL R R L L.

Applied:

Applied musical notation for Nine Stroke Roll, showing a 4/4 time signature and a series of eighth notes with accents. The notes are G4, A4, B4, A4, G4, F4, E4, D4, C4. Below the staff, the following sequence of letters is written: RLRLR LRLRL R R L L RLRLR LRLRL R L L R R L.

TRACK YOUR PROGRESS:

BRONZE	SILVER	GOLD	PLATINUM	DIAMOND
<i>m.m. = 60 – 75</i>	<i>m.m. = 80 – 95</i>	<i>m.m. = 100 – 115</i>	<i>m.m. = 120 – 135</i>	<i>m.m. = 140 – 160</i>

THE RUDIMENTS:

A Learning Sequence

Quadrant B, page 3

17. 13 STROKE ROLL

Musical notation for 17. 13 Stroke Roll. A single staff in 4/4 time with a key signature of one sharp (F#). The notation consists of four eighth notes: R, R, L, L. Each note has an accent (>) above it. The notes are connected by a slur.

Applied:

Applied musical notation for 17. 13 Stroke Roll. A single staff in 4/4 time with a key signature of one sharp (F#). The notation consists of four groups of eighth notes: R, R L, L R, and R L L R. Each group has an accent (>) above it. The groups are connected by a slur.

TRACK YOUR PROGRESS:

BRONZE	SILVER	GOLD	PLATINUM	DIAMOND
<i>m.m. = 60 - 75</i>	<i>m.m. = 80 - 95</i>	<i>m.m. = 100 - 115</i>	<i>m.m. = 120 - 135</i>	<i>m.m. = 140 - 160</i>

18. 17 STROKE ROLL

Musical notation for 18. 17 Stroke Roll. A single staff in 4/4 time with a key signature of one sharp (F#). The notation consists of four eighth notes: R, R, L, L. Each note has an accent (>) above it. The notes are connected by a slur.

Applied:

Applied musical notation for 18. 17 Stroke Roll. A single staff in 3/4 time with a key signature of one sharp (F#). The notation consists of four groups of eighth notes: R L R L R L R L R, L R L R L R L R L, R, and L. Each group has an accent (>) above it. The groups are connected by a slur.

TRACK YOUR PROGRESS:

BRONZE	SILVER	GOLD	PLATINUM	DIAMOND
<i>m.m. = 60 - 75</i>	<i>m.m. = 80 - 95</i>	<i>m.m. = 100 - 115</i>	<i>m.m. = 120 - 135</i>	<i>m.m. = 140 - 160</i>

19. LESSON 25

Musical notation for 19. Lesson 25. A single staff in 4/4 time with a key signature of one sharp (F#). The notation consists of two groups of eighth notes: LLR L R LLR L R and LLR L R LL R L R LL R L. Each group has an accent (>) above it. The groups are connected by a slur. An 'or' symbol is placed between the two groups.

Applied:

Applied musical notation for 19. Lesson 25. A single staff in 4/4 time with a key signature of one sharp (F#). The notation consists of four groups of eighth notes: R L R L R, R L R L R, R L R L R, and R L R L R. Each group has an accent (>) above it. The groups are connected by a slur.

TRACK YOUR PROGRESS:

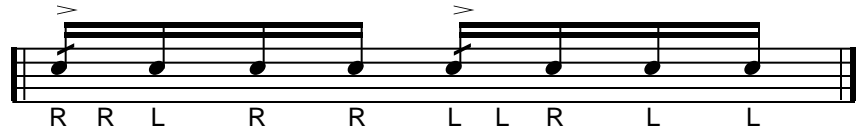
BRONZE	SILVER	GOLD	PLATINUM	DIAMOND
<i>m.m. = 60 - 75</i>	<i>m.m. = 80 - 95</i>	<i>m.m. = 100 - 115</i>	<i>m.m. = 120 - 135</i>	<i>m.m. = 140 - 160</i>

THE RUDIMENTS:

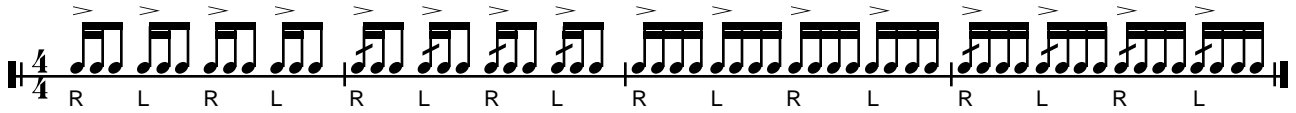
A Learning Sequence

Quadrant B, page 4

20. DRAGADIDDLE



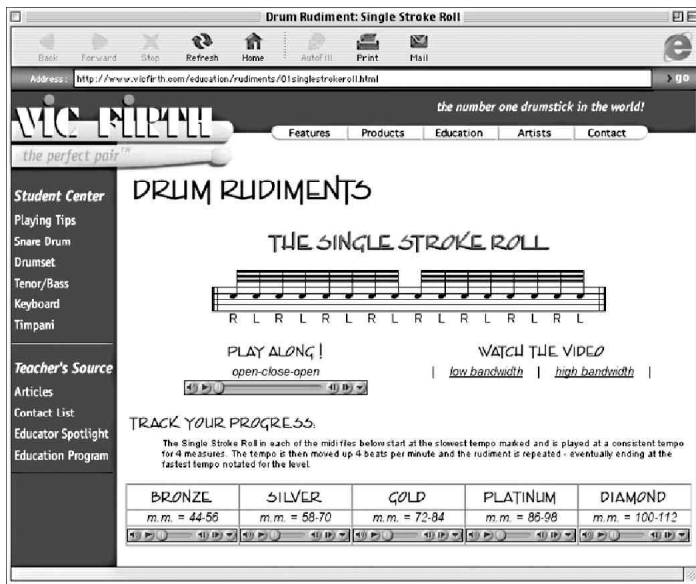
Applied:



TRACK YOUR PROGRESS:

BRONZE	SILVER	GOLD	PLATINUM	DIAMOND
<i>m.m. = 60 - 75</i>	<i>m.m. = 80 - 95</i>	<i>m.m. = 100 - 115</i>	<i>m.m. = 120 - 135</i>	<i>m.m. = 140 - 160</i>

LEARN YOUR RUDIMENTS ONLINE!



WATCH A VIDEO OF THE RUDIMENT BEING PLAYED BY DR. JOHN WOOTON!

PLAY ALONG WITH OUR AUDIO FILES!

TRACK YOUR PROGRESS! EACH LEVEL HAS A MIDI FILE TO PLAY ALONG WITH!

GET PRACTICE SUGGESTIONS AND EXERCISES FROM THE EXPERTS!

